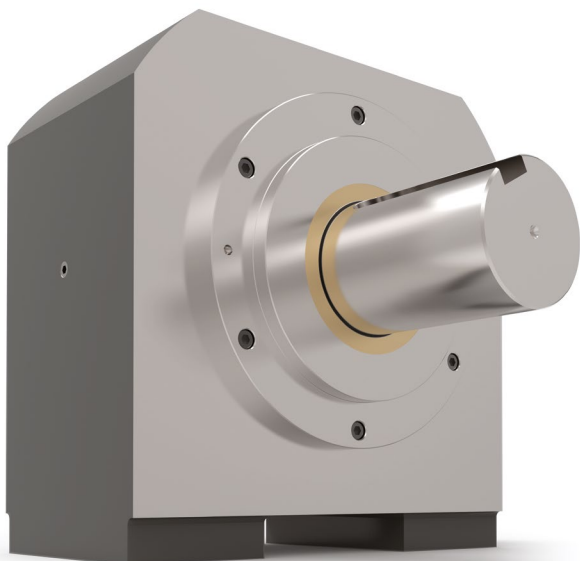


## Series 1500

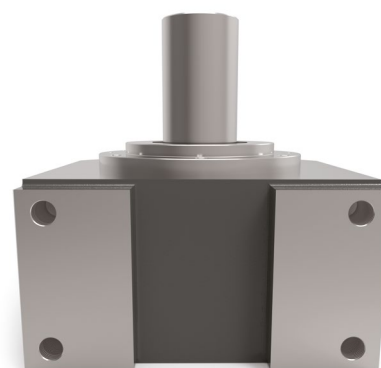
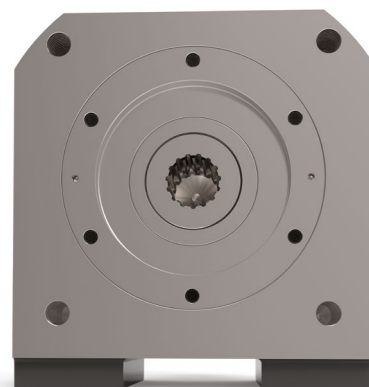
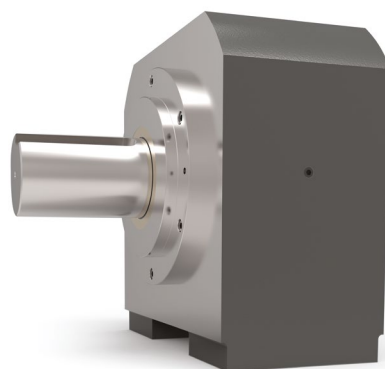


### Features

- SAE F 4-bolt mounting
- Extra Heavy Duty Tapered Roller Bearings
- May be either Face-mounted or Foot-mounted
- Provides a sturdy mounting base for the motor or pump
- Supports heavy radial and axial loads – protecting the hydraulic motor or pump
- Reduces downtime and maintenance costs
- Protects pump or motor shaft seal from harmful contaminants
- Other versions with adaptor mounting for DIN, ISO, IEC or NEMA motors

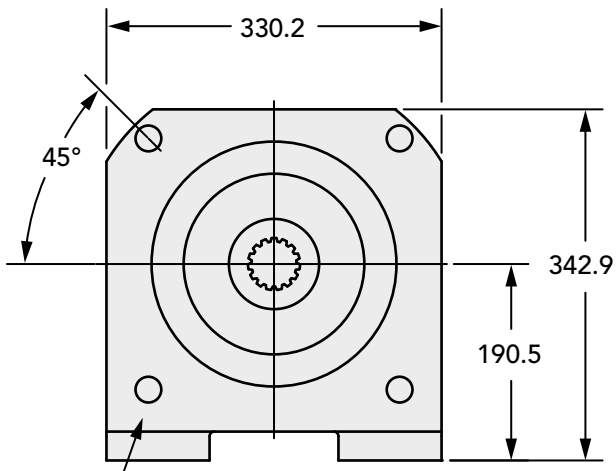
### 1500 Series Data

Input Standard	SAE F 4-bolt mount
Input Pilot Diameter	177.8 mm
Input Pilot Depth	15.9 mm
Input Pilot Sealing Method	Fiber Gasket
Input Bore Diameter and Depth	15 tooth 8/16 spline (bore depth 85 mm)
Input Shaft Seal Type	Double-lip with Garter Spring
Output Shaft Diameter	88.9 mm
Output Shaft Keyway	22.23 mm x 11.11 mm keyway
Output Shaft Keyway Length	104.9 mm
Output Shaft Length	127.0 mm
Output Shaft Seal Type	Double-lip with Garter Spring
Output Pilot Diameter	177.8 mm
Output Pilot Height	12.7 mm
Shaft Material	Stressproof Steel (1.0762) or an equivalent
Bearing Type	Spherical Roller Bearings
Standard Lubrication Method	Grease
Optional Lubrication Methods	Please consult Zero-Max.
Grease Fitting	Optional
Grease Capacity	Minimum ca. 325 ml Maximum ca. 650 ml
Grease type (recommended for typical applications)	NLGI #2
Recommended Grease Base	Lithium
Standard Mounting Orientation	Shaft Horizontal – Consult Zero-Max for other Mounting Orientations.
Maximum Speed Without Modification	1500 RPM
Housing Material	Cast Iron
Housing Feet - Threaded Holes	(4) 1"-8 UNC x 50.8 mm
Housing Grease Ports	(3) 1/2-13 UNC x 31.75 mm
Unit Weight	113.4 kg



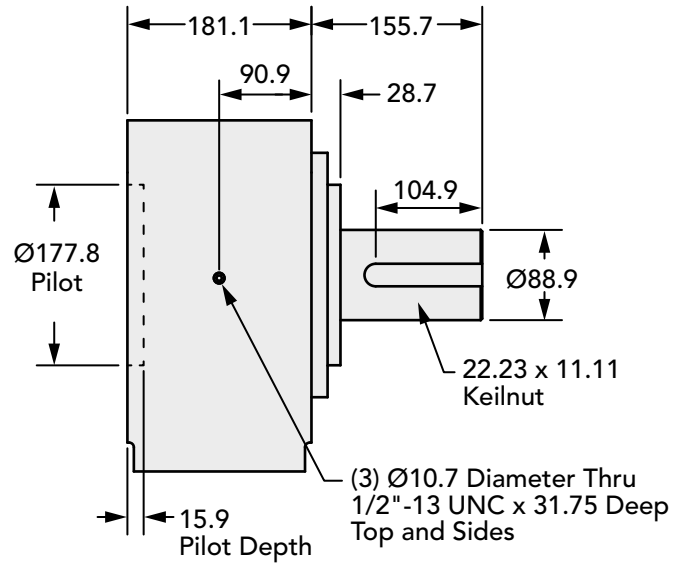
### Technical Information (all dimensions in mm)

#### Input End View

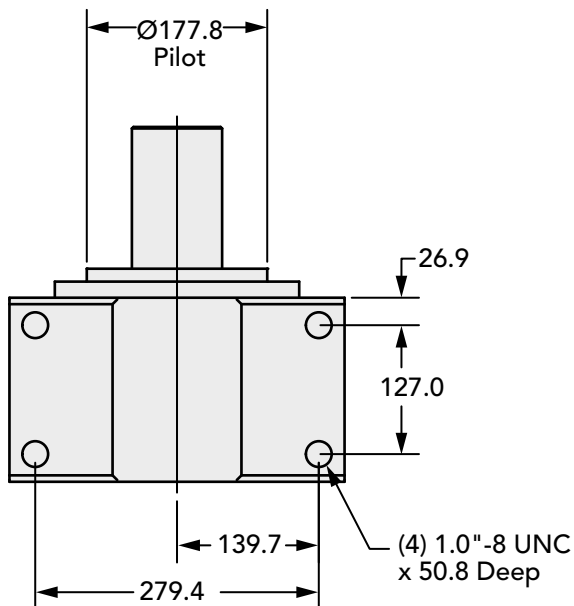


(4) 1.0"-8 UNC x 50.8 Deep Equally Spaced on a Ø350.0 Diameter Bolt Circle Input End Only

#### Side View



#### Bottom View



#### How to Order

##### 1500 Series Data

Model	Output Shaft - Keyway	Input Bore - Keyway
1500-15S	88.90 mm - 22.23 mm x 11.11 mm	15 Tooth 8/16 Spline