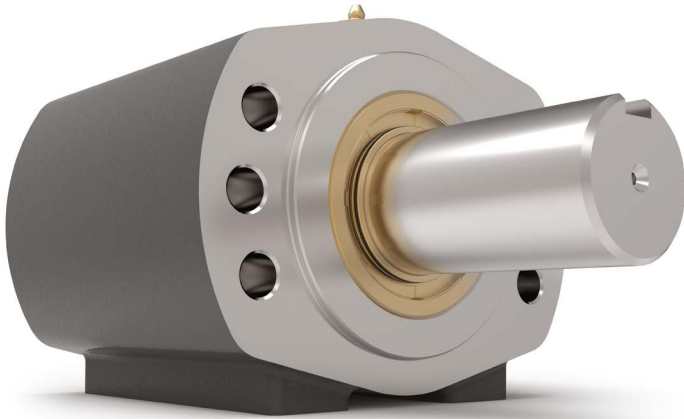


## Series 350



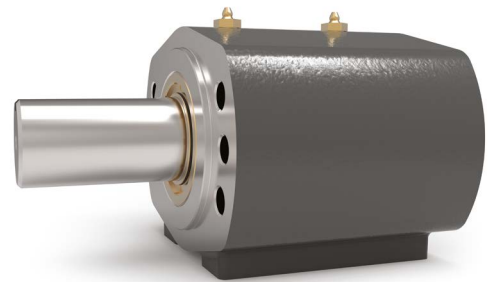
### Features

- SAE A 2-bolt or 4-bolt Magneto mounting
- Heavy Duty Spherical Roller Bearings
- May be either Face-mounted or Foot-mounted
- Provides a sturdy mounting base for the motor or pump
- Supports heavy radial and axial loads – protecting the hydraulic motor or pump
- Reduces downtime and maintenance costs
- Protects pump or motor shaft seal from harmful contaminants
- Other versions with adaptor mounting for DIN, ISO, IEC or NEMA motors

### Extra-Duty Series Enhancements:

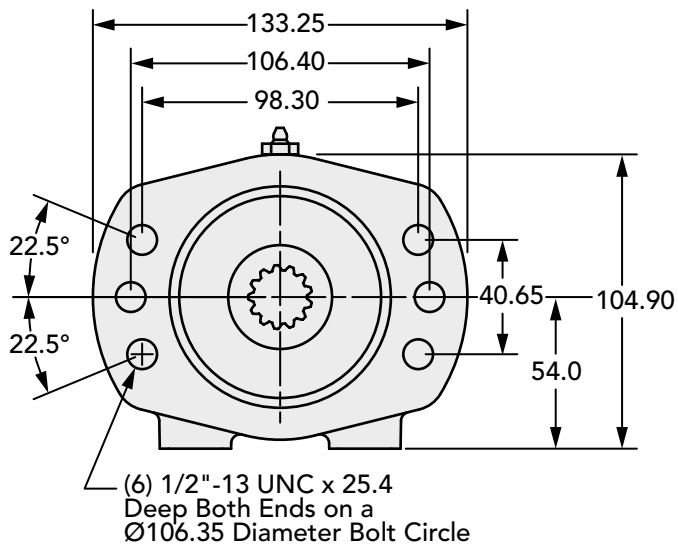
Extended Housing • Spherical Roller Bearings  
Heat-Treated Shaft • Dual NPT Grease Zerk  
O-Ring Input Seal • Double-Primary Lip Output Seal

350 Series Data	
Input Standard	SAE A 2-bolt mount or 4-bolt Magneto Mount
Input Pilot Diameter	82.55 mm
Input Pilot Depth	6.35 mm
Input Pilot Sealing Method	O-Ring
Input Bore Diameter and Depth	13 tooth 16/32 spline (bore depth 57 mm) 14 tooth 12/24 spline (bore depth 57 mm)
Output Shaft Diameter	38.1 mm
Output Shaft Keyway	9.53 mm x 4.76 mm keyway
Output Shaft Keyway Length	63.5 mm
Output Shaft Length	69.85 mm
Output Shaft Seal Type	Double Primary Lip Seal With Garter Springs
Output Pilot Diameter	82.55 mm
Output Pilot Height	3.18 mm
Shaft Material	Stressproof Steel (1.6523) or an equivalent
Bearing Type	Spherical Roller Bearing
Standard Lubrication Method	Grease
Optional Lubrication Methods	Please consult Zero-Max.
Grease Fittings	(2) Standard Zerk Fitting
Grease Capacity	Minimum ca. 35 ml (17.5 ml per grease fitting) Maximum ca. 65 ml (32.5 ml per grease fitting)
Grease Type (recommended for typical applications)	NLGI #2
Recommended Grease Base	Lithium
Standard Mounting Orientation	Shaft Horizontal – Consult Zero-Max for other Mounting Orientations.
Maximum Speed Without Modification	3300 RPM
Housing Material	Cast Iron
Housing Feet - Threaded Holes	(4) 3/8"-16 UNC x 17.25 mm
Housing Grease Ports	(2) 1/4-18 NPT
Unit Weight	8.2 kg

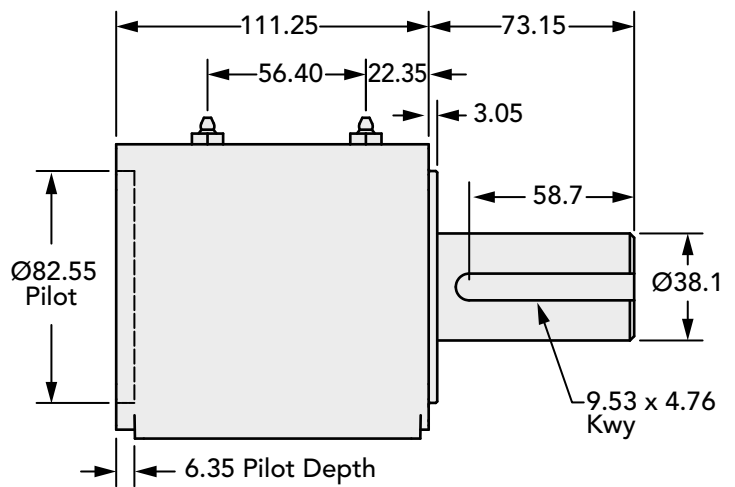


### Technical Information (all dimensions in mm)

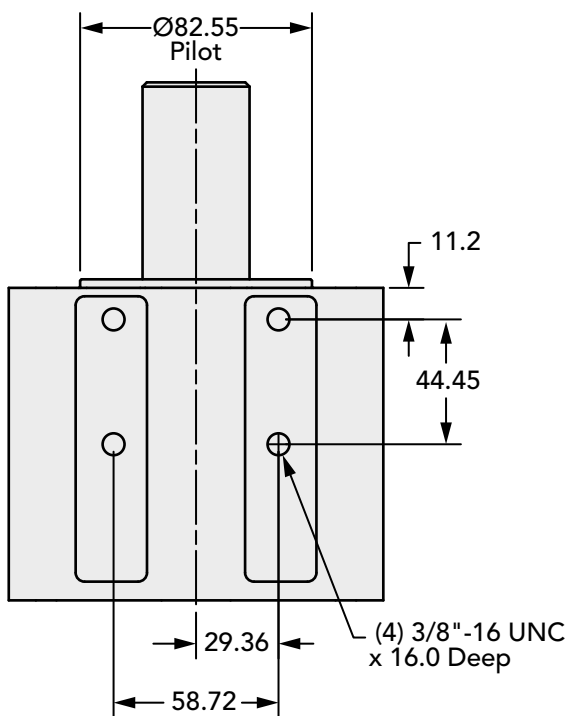
#### Input End View



#### Side View



#### Bottom View



#### How to Order

##### 350 Series Data

Model	Output Shaft – Keyway	Input Bore – Keyway
350-13S	38.1 mm – 9.53 mm x 4.76 mm	13 Tooth 16/32 Spline
350-14S	38.1 mm – 9.53 mm x 4.76 mm	14 Tooth 12/24 Spline