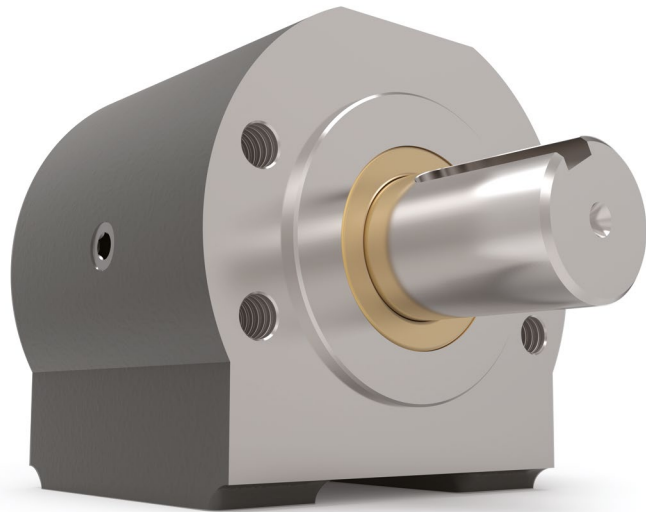


Series 515

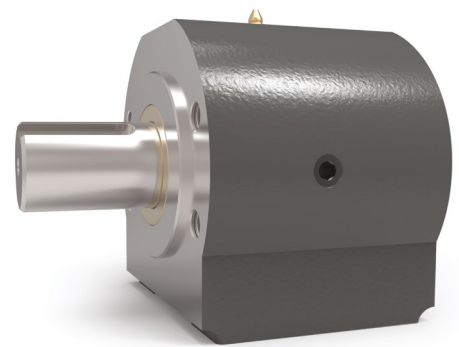


Features

- SAE A 2-bolt or 4-bolt mounting
- Heavy Duty Tapered Roller Bearings
- May be either Face-mounted or Foot-mounted
- Provides a sturdy mounting base for the motor or pump
- Supports heavy radial and axial loads – protecting the hydraulic motor or pump
- Reduces downtime and maintenance costs
- Protects pump or motor shaft seal from harmful contaminants
- Other versions with adaptor mounting for DIN, ISO, IEC or NEMA motors

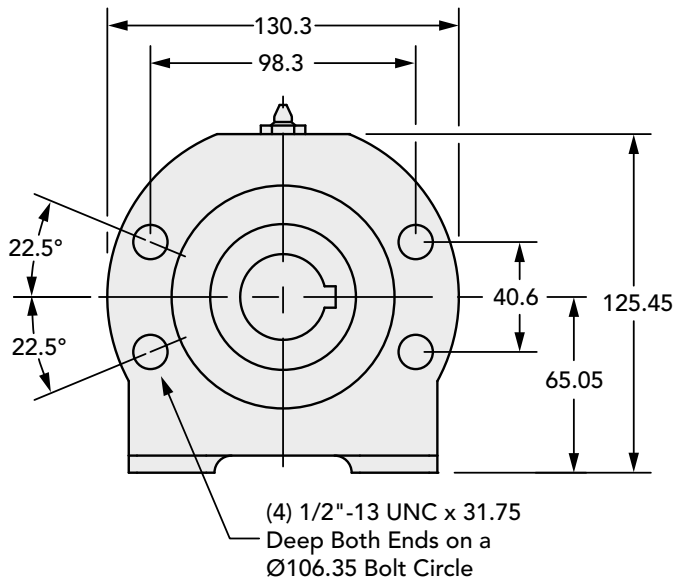
515 Series Data

Input Standard	SAE A 2 bolt – 2 different mounts: 4-bolt Magneto Mount 2-bolt (rotated 22-1/2° from horizontal)
Input Pilot Diameter	82.55 mm
Input Pilot Depth	6.35 mm
Input Pilot Sealing Method	Fiber Gasket
Input Bore Diameter and Depth	31.75 mm keyed (bore depth 63mm) 6B Spline (bore depth 68 mm) 14 tooth 12/24 spline (bore depth 69 mm)
Input Shaft Seal Type	Double-lip with Garter Spring
Output Shaft Diameter	38.1 mm
Output Shaft Keyway	9.53 mm x 4.76 mm keyway
Output Shaft Keyway Length	42.9 mm
Output Shaft Length	57.15 mm
Output Shaft Seal Type	Double-lip with Garter Spring
Output Pilot Diameter	82.55 mm
Output Pilot Height	3.18 mm
Shaft Material	Stressproof Steel (1.0762) or an equivalent
Bearing Type	Tapered Roller Bearings
Standard Lubrication Method	Grease
Optional Lubrication Methods	Please consult Zero-Max.
Grease Fitting	(1) Standard Zerk Fitting
Grease Capacity	Minimum ca. 60 ml Maximum ca. 120 ml
Grease Type (recommended for typical applications)	NLGI #2
Recommended Grease Base	Lithium
Standard Mounting Orientation	Shaft Horizontal – Consult Zero-Max for other Mounting Orientations.
Maximum Speed Without Modification	2300 RPM
Housing Material	Cast Iron
Housing Feet - Threaded Holes	(4) 3/8"-16 UNC x 25.4 mm
Housing Grease Ports	1/4-18 NPT
Unit Weight	9.98 kg

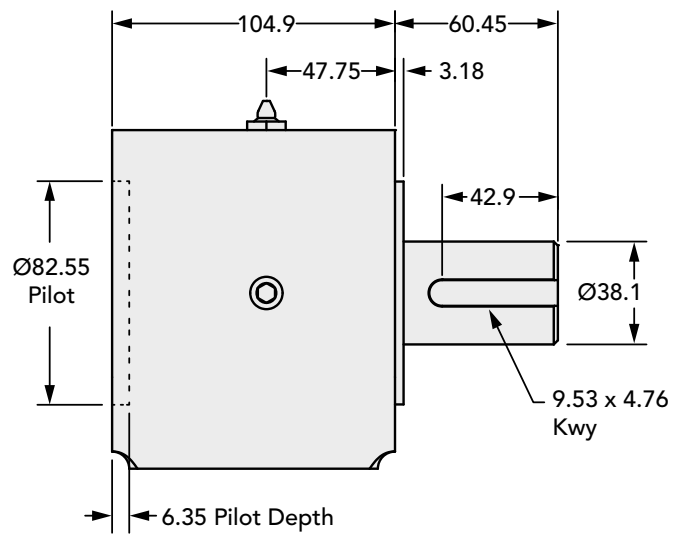


Technical Information (all dimensions in mm)

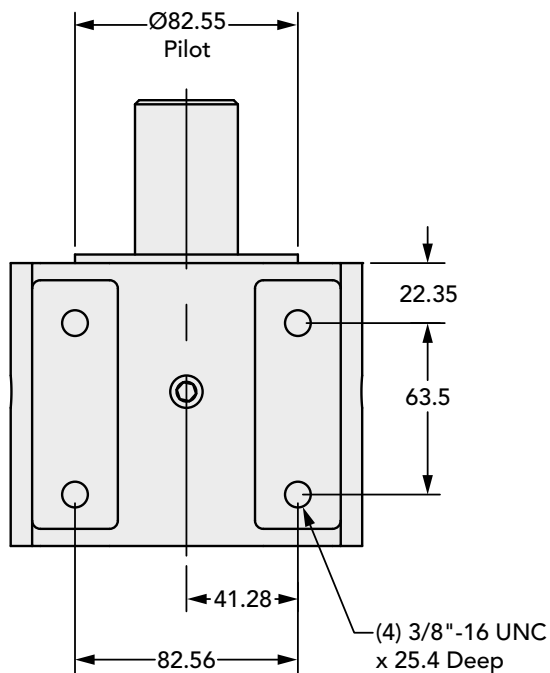
Input End View



Side View



Bottom View



How to Order

515 Series Data

Model	Output Shaft – Keyway	Input Bore – Keyway
515-14S	38.1 mm – 9.53 mm x 4.76 mm	14 Tooth 12/24 spline
515-20	38.1 mm – 9.53 mm x 4.76 mm	31.75 mm – 7.94 mm x 3.97 mm
515-6BS	38.1 mm – 9.53 mm x 4.76 mm	6SB Spline