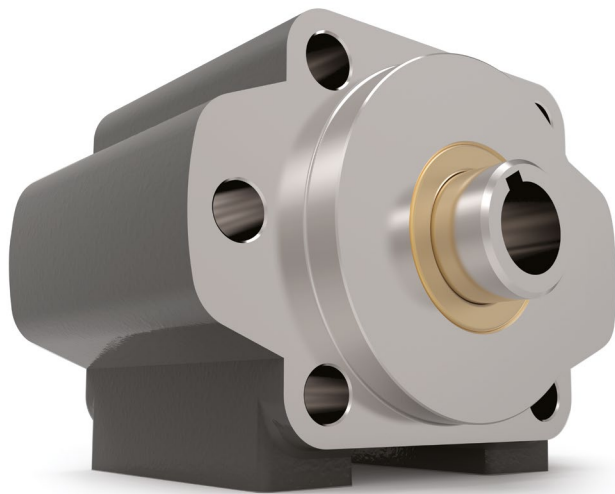


Series 600F

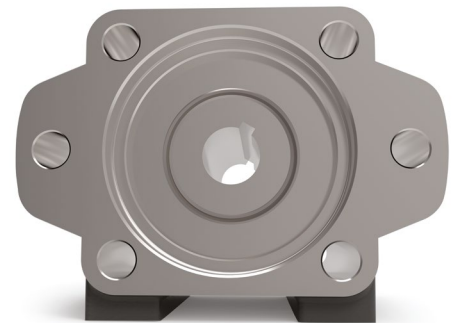
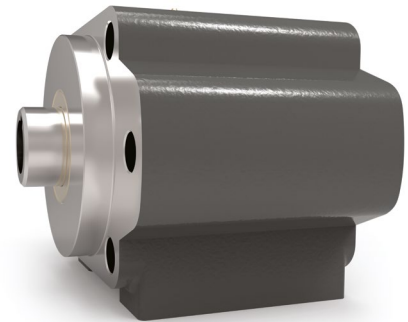


Features

- SAE B 2-bolt or 4-bolt mounting
- Heavy Duty Tapered Roller Bearings
- May be either Face-mounted or Foot-mounted
- Provides a sturdy mounting base for the motor or pump
- Supports heavy radial and axial loads – protecting the hydraulic motor or pump
- Reduces downtime and maintenance costs
- Protects pump or motor shaft seal from harmful contaminants
- Other versions with adaptor mounting for DIN, ISO, IEC or NEMA motors

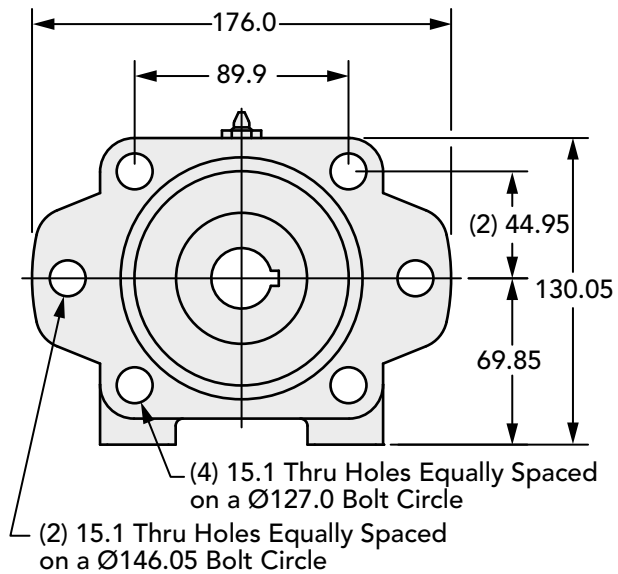
600F Series Data

Input Standard	SAE B 2-bolt or SAE B 4-bolt mount
Input Pilot Diameter	101.6 mm
Input Pilot Depth	12.7 mm
Input Pilot Sealing Method	Fiber Gasket
Input Bore Diameter and Depth	25.4 mm through-bore
Input Shaft Seal Type	Double-lip with Garter Spring
Output Shaft Diameter	25.4 mm through-bore
Output Shaft Keyway	6.35 mm x 3.18 mm keyway the entire length of the bore
Output Shaft Length	18.5 mm extension
Output Shaft Seal Type	Double-lip with Garter Spring
Output Pilot Diameter	101.6 mm
Output Pilot Height	12.7 mm
Shaft Material	Stressproof Steel (1.0762) or an equivalent
Bearing Type	Tapered Roller Bearings
Standard Lubrication Method	Grease
Optional Lubrication Methods	Please consult Zero-Max.
Grease Fitting	(1) Standard Zerk Fitting
Grease Capacity	Minimum ca. 65 ml Maximum ca. 130 ml
Grease Type (recommended for typical applications)	NLGI #2
Recommended Grease Base	Lithium
Standard Mounting Orientation	Shaft Horizontal – Consult Zero-Max for other Mounting Orientations.
Maximum Speed Without Modification	2300 RPM
Housing Material	Cast Iron
Housing Feet - Threaded Holes	(4) 7/16"-14 UNC x 19.05 mm
Housing Grease Ports	1/4-18 NPT
Unit Weight	13.6 kg

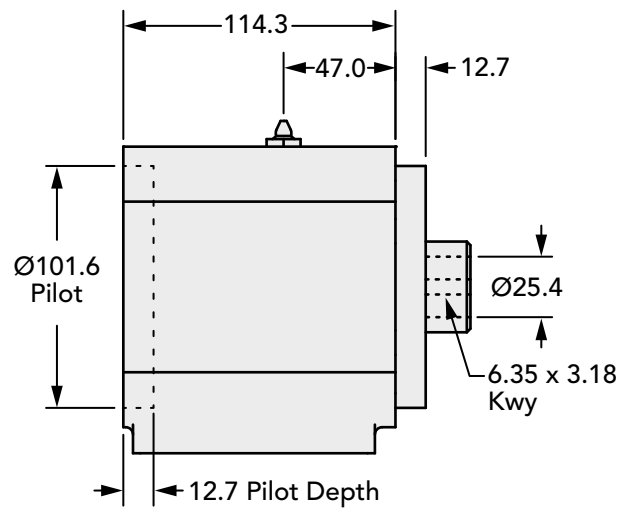


Technical Information (all dimensions in mm)

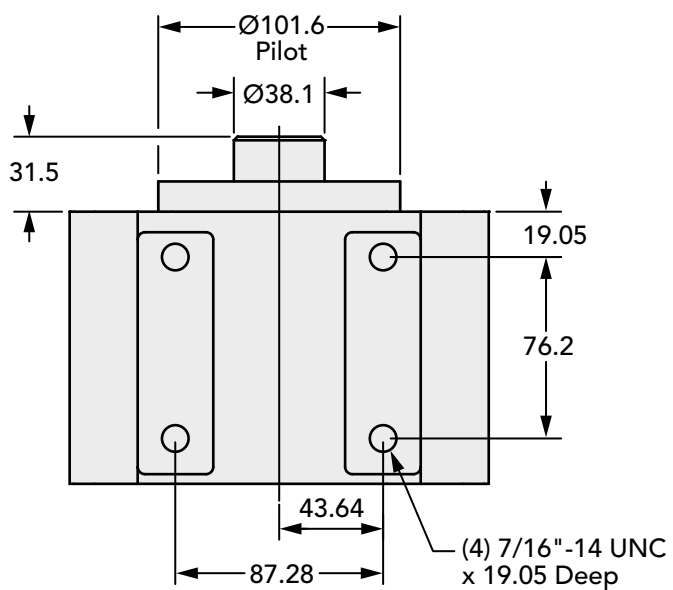
Input End View



Side View



Bottom View



How to Order

600F Series Data

Model	Output Shaft - Keyway	Input Bore - Keyway
600F	25.4 mm - 6.35 mm x 3.18 mm	25.4 mm - 6.35 mm x 3.18 mm