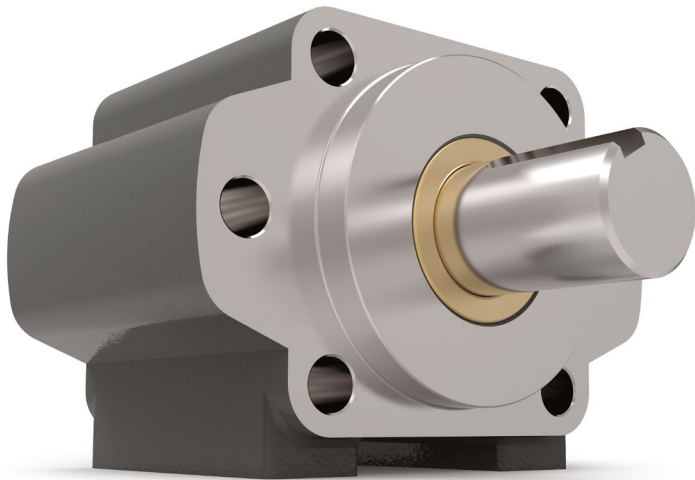


Series 615M

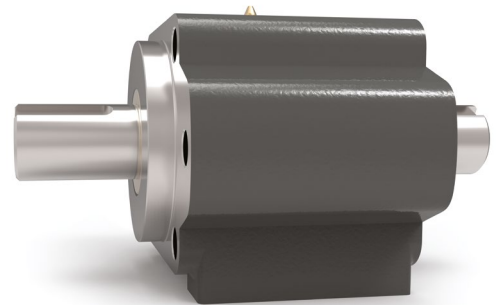


Features

- Double-male shaft configuration with dual seals
- SAE B 2-bolt or 4-bolt mounting pattern
- Heavy Duty Tapered Roller Bearings
- May be either Face-mounted or Foot-mounted
- Provides a sturdy mounting base for the motor or pump
- Supports heavy radial and axial loads – protecting the hydraulic motor or pump
- Reduces downtime and maintenance costs
- Protects pump or motor shaft seal from harmful contaminants
- Other versions with adaptor mounting for DIN, ISO, IEC or NEMA motors

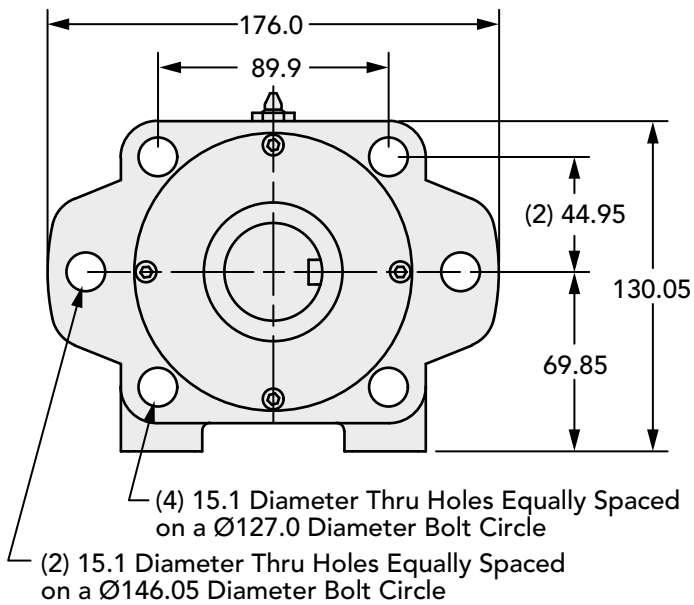
615M Series Data

Face Mount Pattern	SAE B 2-bolt or SAE B 4-bolt
Input Shaft Diameter	38.1 mm
Input Shaft Keyway	9.53 mm x 4.76 mm keyway
Input Shaft Keyway Length	42.9 mm
Input Shaft Length	59.7 mm
Input Shaft Seal Type	Double-lip with Garter Spring
Input Pilot	N/A
Input Plate Seal Type	O-Ring
Output Shaft Diameter	38.1 mm
Output Shaft Keyway	9.53 mm x 4.76 mm keyway
Output Shaft Keyway Length	42.9 mm
Output Shaft Length	59.7 mm
Output Shaft Seal Type	Double-lip with Garter Spring
Output Pilot Diameter	101.6 mm
Output Pilot Height	12.7 mm
Shaft Material	Stressproof Steel (1.0762) or an equivalent
Bearing Type	Tapered Roller Bearings
Standard Lubrication Method	Grease
Optional Lubrication Methods	Please consult Zero-Max.
Grease Fitting	(1) Standard Zerk Fitting
Grease Capacity	Minimum ca. 65 ml Maximum ca. 130 ml
Grease Type (recommended for typical applications)	NLGI #2
Recommended Grease base	Lithium
Standard mounting orientation	Shaft Horizontal – Consult Zero-Max for other Mounting Orientations.
Maximum Speed Without Modification	2300 RPM
Housing Material	Cast Iron
Housing Feet - Threaded Holes	(4) 7/16"-14 UNC x 19.05 mm
Housing Grease Ports	1/4-18 NPT
Unit Weight	13.6 kg

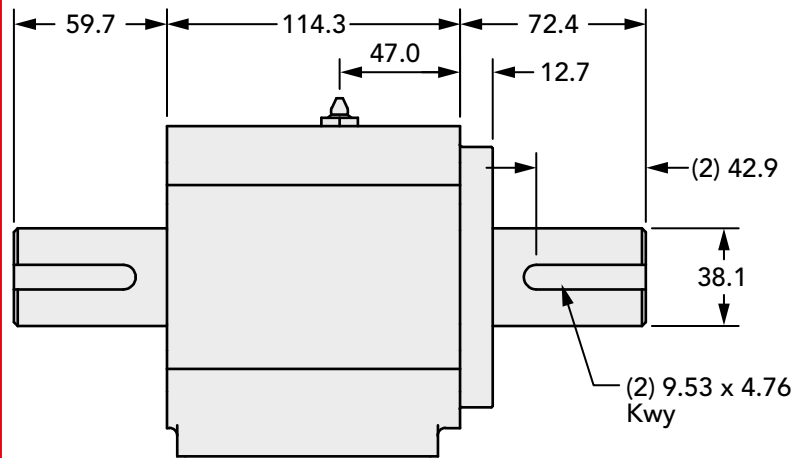


Technical Information (all dimensions in mm)

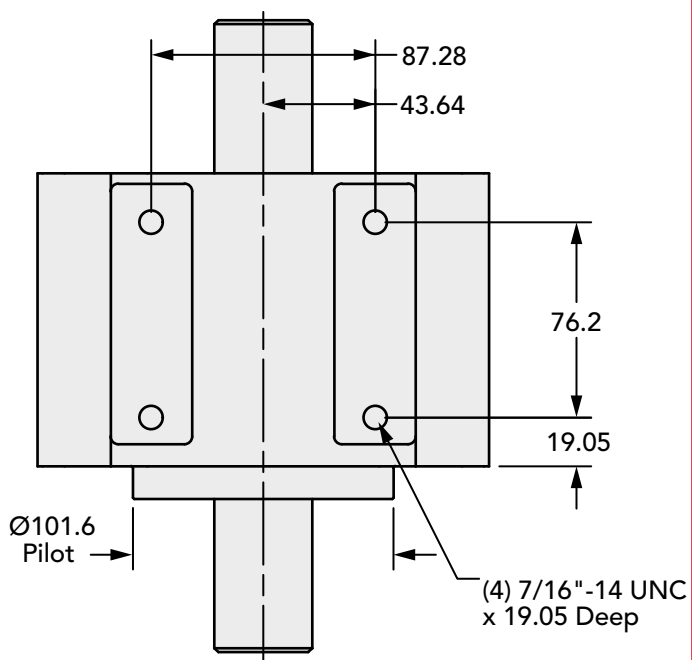
Input End View



Side View



Bottom View



How to Order

615M Series Data

Model	Output Shaft - Keyway	Input Bore - Keyway
615M	38.1 mm - 9.53 mm x 4.76 mm	38.1 mm - 9.53 mm x 4.76 mm