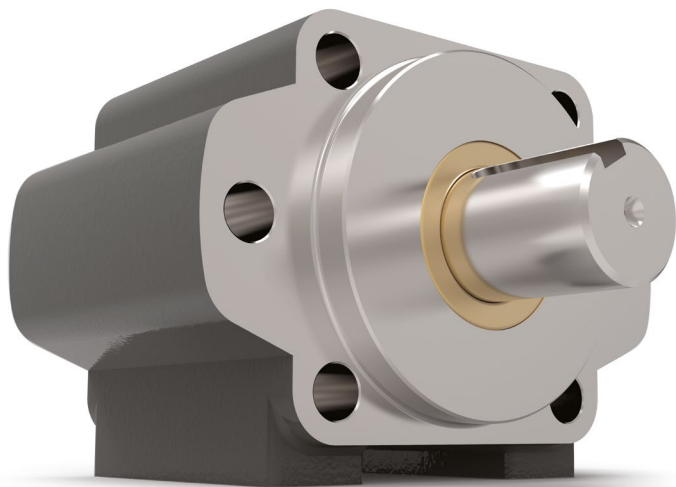


Series 615

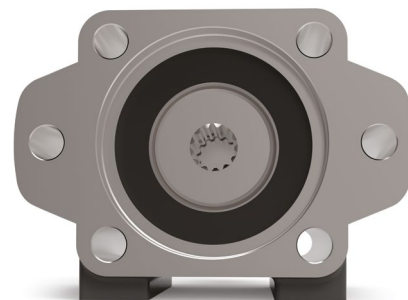
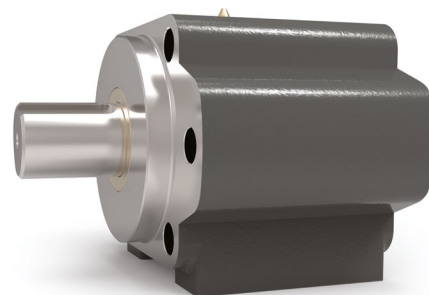


Features

- SAE B 2-bolt or 4-bolt mounting
- Heavy Duty Tapered Roller Bearings
- May be either Face-mounted or Foot-mounted
- Provides a sturdy mounting base for the motor or pump
- Supports heavy radial and axial loads – protecting the hydraulic motor or pump
- Reduces downtime and maintenance costs
- Protects pump or motor shaft seal from harmful contaminants
- Other versions with adaptor mounting for DIN, ISO, IEC or NEMA motors

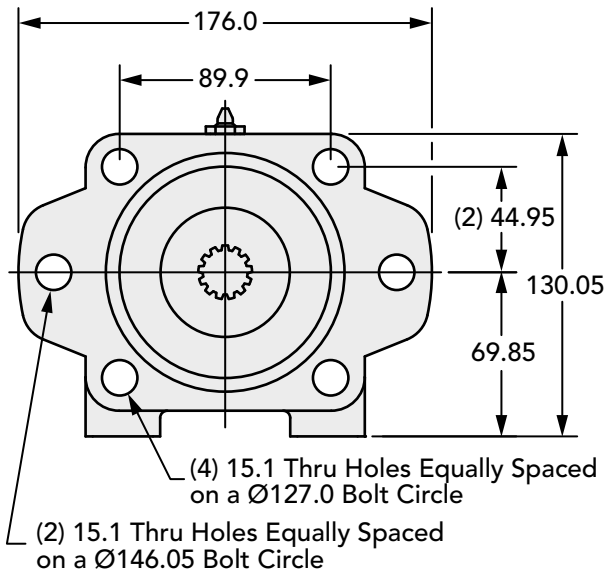
615 Series Data

Input Standard	SAE B 2-bolt or SAE B 4-bolt mount
Input Pilot Diameter	101.6 mm
Input Pilot Depth	12.7 mm
Input Pilot Sealing Method	Faserdichtung
Input Bore Diameter and Depth	13 tooth 16/32 spline (bore depth 67 mm) 15 tooth 16/32 spline (bore depth 67 mm) 22.23 mm keyed shaft (bore depth 72 mm) 25.4 mm keyed shaft (bore depth 72 mm) 31.75 mm keyed shaft (bore depth 72 mm)
Input Shaft Seal Type	Double-lip with Garter Spring
Output Shaft Diameter	38.1 mm
Output Shaft Keyway	9.53 mm x 4.76 mm keyway
Output Shaft Keyway Length	42.9 mm
Output Shaft Length	50.8 mm
Output Shaft Seal Type	Double-lip with Garter Spring
Output Pilot Diameter	101.6 mm
Output Pilot Height	12.7 mm
Shaft Material	Stressproof Steel (1.0762) or an equivalent
Bearing Type	Tapered Roller Bearings
Standard Lubrication Method	Grease
Optional Lubrication Methods	Please consult Zero-Max.
Grease Fitting	(1) Standard Zerk Fitting
Grease Capacity	Minimum ca. 65 ml Maximum ca. 130 ml
Grease Type (recommended for typical applications)	NLGI #2
Recommended Grease base	Lithium
Standard mounting orientation	Shaft Horizontal – Consult Zero-Max for other Mounting Orientations.
Maximum Speed Without Modification	2300 RPM
Housing Material	Cast Iron
Housing Feet - Threaded Holes	(4) 7/16"-14 UNC x 19.05 mm
Housing Grease Ports	1/4-18 NPT
Unit Weight	13.6 kg

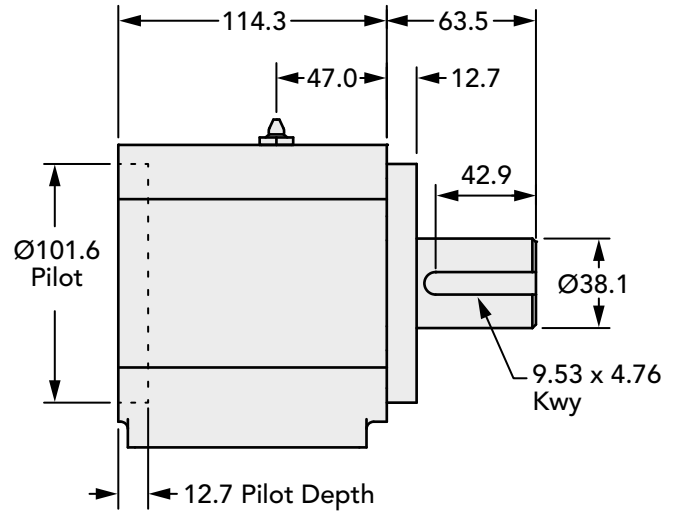


Technical Information (all dimensions in mm)

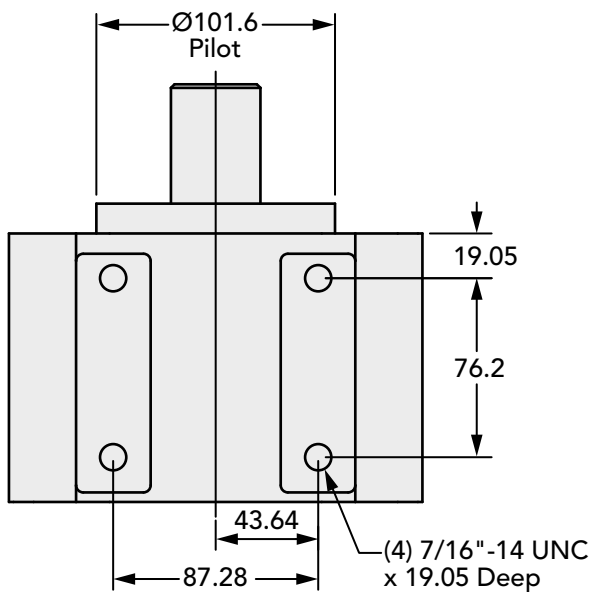
Input End View



Side View



Bottom View



How to Order

615 Series Data

Model	Output Shaft – Keyway	Input Bore – Keyway
615-13S	38.1 mm – 9.53 mm x 4.76 mm	13 Tooth 16/32 Spline
615-15S	38.1 mm – 9.53 mm x 4.76 mm	15 Tooth 16/32 Spline
615-14K	38.1 mm – 9.53 mm x 4.76 mm	22.23 mm – 4.76 mm x 2.38 mm
615-14	38.1 mm – 9.53 mm x 4.76 mm	22.23 mm – 6.35 mm x 3.18 mm
615-16K	38.1 mm – 9.53 mm x 4.76 mm	25.4 mm – 7.94 mm x 3.97 mm
615-16	38.1 mm – 9.53 mm x 4.76 mm	25.4 mm – 6.35 mm x 3.18 mm
615-20	38.1 mm – 9.53 mm x 4.76 mm	31.75 mm – 7.94 mm x 3.97 mm