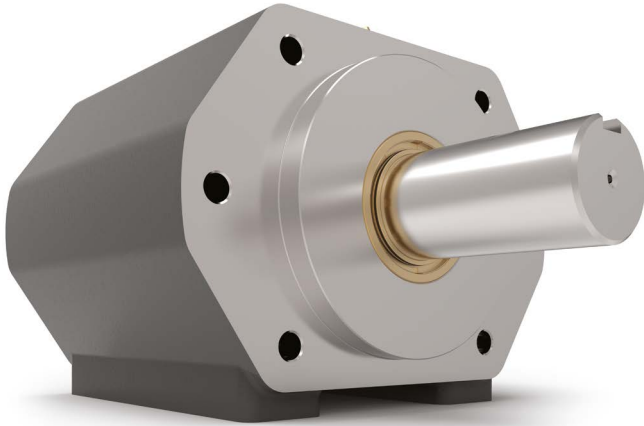


Series 950

Features

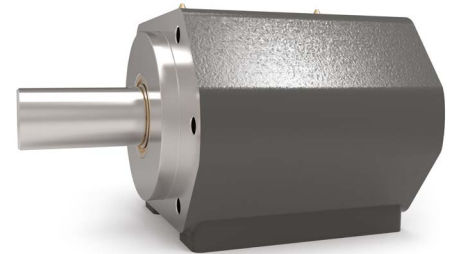
- SAE C 2-bolt or 4-bolt mounting
- Heavy Duty Spherical Roller Bearings
- May be either Face-mounted or Foot-mounted
- Provides a sturdy mounting base for the motor or pump
- Supports heavy radial and axial loads – protecting the hydraulic motor or pump
- Reduces downtime and maintenance costs
- Protects pump or motor shaft seal from harmful contaminants
- Other versions with adaptor mounting for DIN, ISO, IEC or NEMA motors



Extra-Duty Series Enhancements:

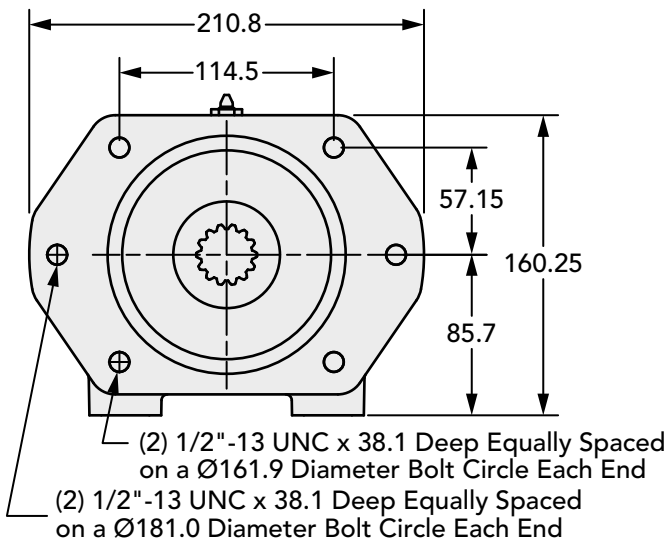
Extended Housing • Spherical Roller Bearings
Heat-Treated Shaft • Dual NPT Grease Zerk
O-Ring Input Seal • Double-Primary Lip Output Seal

950 Series Data	
Input Standard	SAE C 2-bolt or SAE C 4-bolt mount
Input Pilot Diameter	127 mm
Input Pilot Depth	12.7 mm
Input Pilot Sealing Method	O-Ring
Input Bore Diameter and Depth	14 tooth 12/24 spline (bore depth 88 mm) 17 tooth 12/24 spline (bore depth 88 mm)
Output Shaft Diameter	44.45 mm
Output Shaft Keyway	11.11 mm x 5.56 mm keyway
Output Shaft Keyway Length	82.55 mm
Output Shaft Length	88.9 mm
Output Shaft Seal Type	Double Primary Lip Seal With Garter Springs
Output Pilot Diameter	127.0 mm
Output Pilot Height	12.7 mm
Shaft Material	Stressproof Steel (1.6523) or an equivalent
Bearing Type	Spherical Roller Bearing
Standard Lubrication Method	Grease
Optional Lubrication Methods	Please consult Zero-Max.
Grease Fittings	(2) Standard Zerk Fitting
Grease Capacity	Minimum ca. 200 ml (100 ml per grease fitting) Maximum ca. 400 ml (200 ml per grease fitting)
Grease Type (recommended for typical applications)	NLGI #2
Recommended Grease Base	Lithium
Standard Mounting Orientation	Shaft Horizontal – Consult Zero-Max for other Mounting Orientations.
Maximum Speed Without Modification	2500 RPM
Housing Material	Cast Iron
Housing Feet - Threaded Holes	(4) 1/2"-13 UNC x 25.4 mm
Housing Grease Ports	(2) 1/4-18 NPT
Unit Weight	31.8 kg

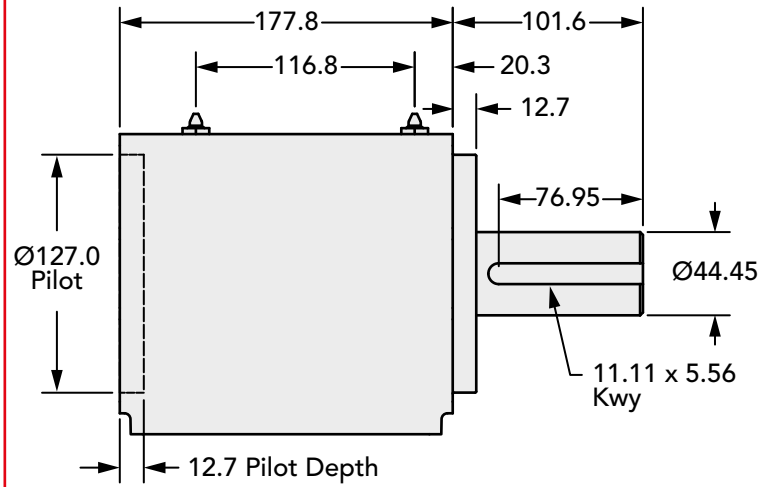


Technical Information (all dimensions in mm)

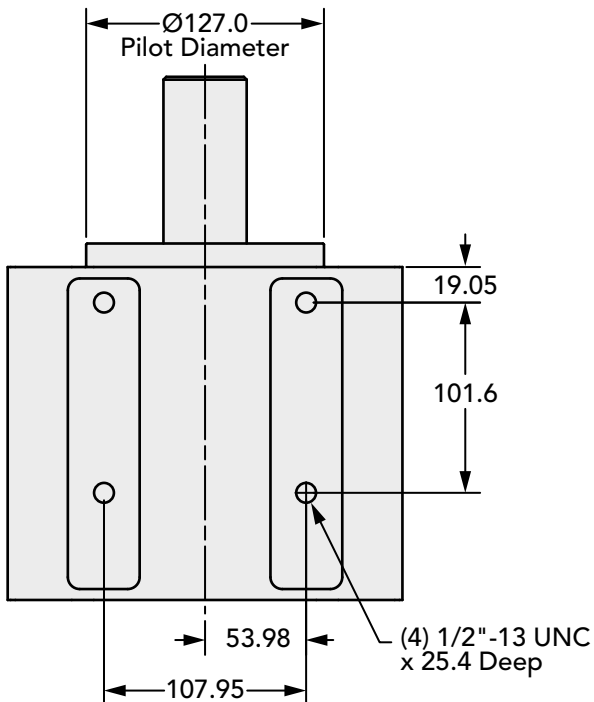
Input End View



Side View



Bottom View



How to Order

950 Series Data		
Model	Output Shaft – Keyway	Input Bore – Keyway
950-14S	44.45 mm – 11.11 mm x 5.56 mm	14 Tooth 12/24 Spline
950-17S	44.45 mm – 11.11 mm x 5.56 mm	17 Tooth 12/24 Spline